



St Mary's School
CAMBRIDGE

St Mary's

THE PLACE TO BE

ME

Senior School Prospectus

Inspiring girls since 1898

Independent day and boarding school

stmaryscambridge.co.uk



THE PLACE TO BE

ME

At St Mary's, pupils find the inspiration, opportunity and support they need to be themselves and to pursue their individual talents with confidence and joy.

Our approach will enable intellectual and social confidence to flourish.

Whatever future path your child chooses... engineer, artist, programmer, leader, linguist, mathematician, athlete, musician, citizen... we empower each pupil to realise their unique potential, to follow their dreams and to make a positive contribution to society.



In 2022, St Mary's School received the **highest grade of 'excellent'** for our Independent Schools Inspectorate (ISI) inspection.

Find out more: stmaryscambridge.co.uk/ISI

INSIDE

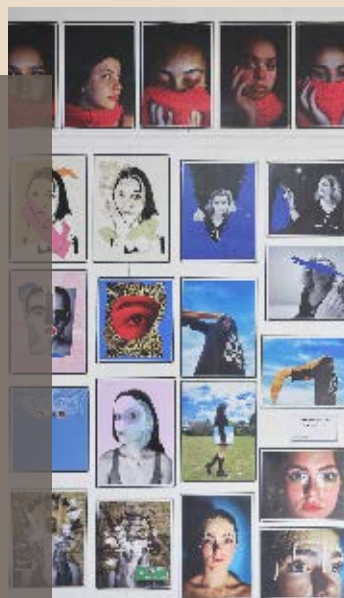
Why choose St Mary's?	06
Senior School (11-16)	08
Boarding (9-18)	26
Joining St Mary's School	30

Visit St Mary's and be inspired...

Our Open Events and virtual tours will enable you to experience our unique and inspirational schools.

stmaryscambridge.co.uk/visit

// WE EMPOWER
OUR PUPILS TO
REALISE THEIR
POTENTIAL, TO
FOLLOW THEIR
DREAMS AND TO
MAKE A POSITIVE
CONTRIBUTION
TO SOCIETY. //



WELCOME TO ST MARY'S SENIOR SCHOOL

Our 17th century foundress, Mary Ward dedicated her life to educating girls – believing that ‘By God’s grace, women in time to come will do much’.

This belief continues to be the heartbeat of St Mary’s and I encourage every girl to become all she can, in school and beyond.

With us, your child will experience an academic education that is liberal, balanced and creative, rooted in timeless values. School life is full of opportunity and joy: every day I hear laughter, see horizons expand and friendships flourish.

This year we celebrated receiving the highest

grade of ‘excellent’ from the Independent Schools Inspectorate (ISI) – confirmation that we continue to deliver a first-class education.

A St Mary’s education will equip your daughter with knowledge and skills, qualities and values that enable her to lead a life that benefits others, as well as finding her own fulfilment.

I warmly invite you to visit and see us in action.



Mrs Charlotte Avery
Headmistress

stmaryscambridge.co.uk/headsblogsenior



// ST MARY'S OFFERS A GOOD
COMMUNITY AROUND YOU
TO FALL BACK ON, AND
TEACHERS THAT GENUINELY
CARE ABOUT YOU.

Student





WHY CHOOSE ST MARY'S?

From our Cambridge location and academic results, to our extra-curricular opportunities and inspiring role models – there are many reasons to choose us.

Aim high

As an accredited High Performance Learning World Class school, we teach skills and attitudes proven to help young people to aim high – not just in exams, but in life.

Set no limits

Here, everything is possible: leadership, science, mathematics, sport... our pupils break down gender stereotypes, pursuing their goals free of limitation.

Have integrity

As a Mary Ward School, our education is built on our Catholic heritage, which places timeless values such as integrity, justice and compassion at the heart of everyday school life.

Be courageous

Each pupil's individual talents are valued, and they develop the self-belief, courage and resilience they need to make their unique contribution to the world.

Be happy

We know our pupils can achieve more if they are happy at school. Supported by exceptional pastoral care and a well-being programme, friendships and happiness flourish here.

stmaryscambridge.co.uk/ourapproach

A SPIRITUAL FOUNDATION

Your child will join a welcoming community of pupils, aged 3 to 18, from all faiths and secular backgrounds.

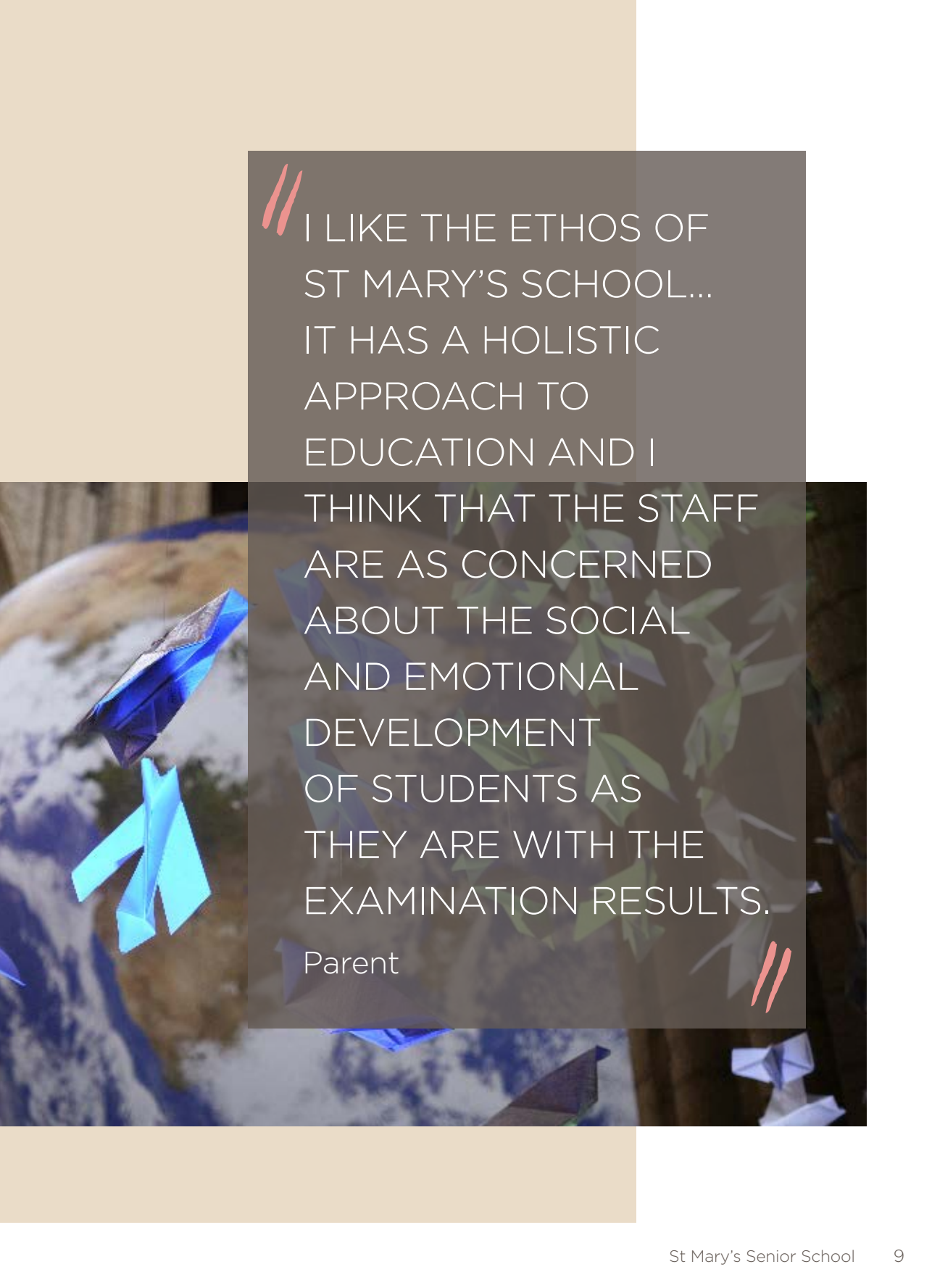
Inspired by the life of our foundress, Mary Ward (1585-1645), a pioneer of education for girls, we offer a learning community rooted in faith. Our approach balances tradition with innovation, combining timeless values with

a forward-looking approach to education.

Mary Ward lived a life of integrity, courage and love. As a role model for our pupils, her achievements provide a core moral and spiritual foundation for life at St Mary's School.

stmaryscambridge.co.uk/ethos





// I LIKE THE ETHOS OF
ST MARY'S SCHOOL...
IT HAS A HOLISTIC
APPROACH TO
EDUCATION AND I
THINK THAT THE STAFF
ARE AS CONCERNED
ABOUT THE SOCIAL
AND EMOTIONAL
DEVELOPMENT
OF STUDENTS AS
THEY ARE WITH THE
EXAMINATION RESULTS.

Parent





ALMOST ALL PUPILS
ACHIEVE PLACES AT
THE MOST SELECTIVE
UNIVERSITIES,
CONSERVATOIRES
AND ART COLLEGES
IN A RANGE OF
DISCIPLINES,
INCLUDING THOSE
WITH THE HIGHEST
ENTRY CRITERIA.

ISI Report 2022



THE PLACE TO BE INSPIRED

At St Mary's, your child's natural curiosity will be ignited as we nurture a love of learning to last a lifetime.

Pupils are supported to discover what motivates and inspires them. Rather than focusing on tests and exams, learning itself will be the goal and the reward.

Our consistently strong exam results, including Value-Added scores, from STEM subjects to the creative and performing

arts, languages and humanities, illustrate the success of our approach.

Our Academic Scholars programme provides plenty of scope to challenge more able students, through a wide range of activities designed to further extend learning.





THE PLACE TO BE HAPPY

For us, your child's happiness is as important as their academic achievement.

We believe results and happiness are inseparable: young people thrive and achieve more when they are happy in school.

In small classes, pupils benefit from personalised support and teaching, tailored to how they learn most effectively. Alongside this, our highly regarded pastoral care and

tutoring supports social and emotional development.

As part of a community rooted in faith, pupils experience values of compassion and empathy. Through physical exercise and creative pursuits, they can establish a well-balanced, healthy and happy life.





OUR RESULTS:

GCSE

44% at **A*** or
equivalent

A Level

45% **A/A***

stmaryscambridge.co.uk/results



THE PLACE TO AIM HIGH

As an accredited **High Performance Learning World Class school**, we will help your child to develop fundamental values, characteristics and skills.

Skills such as confidence, agile thinking, collaboration, positivity, risk-taking and perseverance, alongside values such as a concern for society, equips them for study at GCSE, A Level and prepare her for life beyond school.

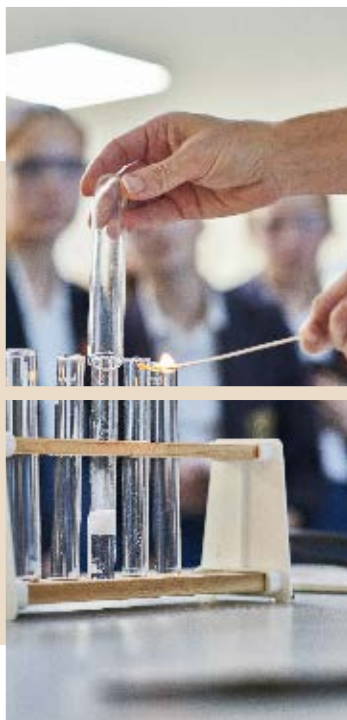
stmaryscambridge.co.uk/hpl

A LOVE OF LEARNING

We foster a love of learning that comes from within. By supporting pupils to discover what motivates them, they will build an internal sense of determination and perseverance.


Our teaching is interactive and engaging; it uses innovative technology as appropriate and our learning experiences are motivating and inspiring.

stmaryscambridge.co.uk/ourapproach



Academic Scholars' programme

This programme challenges students to extend their learning. Activities include cross-curricular Academic Curriculum Days with inspiring guest speakers, our Advanced Learner Challenge, annual Balloon Debate, trips that enrich subject learning and STEM outreach work in local primary schools.



RECOGNISING INDIVIDUAL STRENGTHS

Your child's individual strengths and areas for development will be nurtured through teaching that suits their natural learning styles.

Progress is carefully monitored and discussed transparently and regularly with parents and students. Some pupils access targeted support in-class with a Learning Support Assistant, or via individual or

group classes as part of their curriculum.

Everyone benefits from the expertise of our Learning Support department, which provides advice for all teachers on how best to support our pupils.



THE PLACE FOR STEM

At St Mary's, we are dedicated to instilling a passion for STEM (Science, Technology, Engineering and Maths) subjects in our students, with an inspiring curriculum and programme of talks, events and outings throughout school life.

It is well-documented that learning in an all-girls environment increases the number of girls who select STEM subjects at university and beyond.

Youth STEMM Awards

Supported by our specialist teachers, pupils with an interest in STEM subjects can inspire the next generation, engage the public and develop their leadership skills through the innovative Youth STEMM (Science, Technology, Engineering, Maths and Medicine) Awards scheme.

stmaryscambridge.co.uk/stemmaward





PUPILS MAKE STRONG
PROGRESS ACROSS THE
RANGE OF SUBJECTS' AND
ARE: 'HIGHLY SUCCESSFUL IN
THEIR ACHIEVEMENTS BEYOND
THE CLASSROOM IN A RANGE
OF ACTIVITIES ENCOMPASSING
DIFFERENT INTERESTS.

ISI Report 2022





ENRICHMENT: CODE, PERFORM, COMPETE, LEAD, DESIGN...

St Mary's Enrichment programme makes ours a school filled with activity and creativity.

We firmly believe that this different type of learning freed from the strictures of the curriculum or exam board specifications enables and empowers our pupils to experiment, to enquire, to collaborate, to persevere and to take risks. Dedicated Enrichment time gives them the opportunity to develop as artists, scientists, adventurers and citizens.

All pupils in Years 7-9 follow recognised award paths – the Arts in Year 7, STEM in Year 8 and Adventure (the Duke of Edinburgh's Bronze Award) in Year 9. In

Year 10 students have had the opportunity to branch out and follow a variety of paths: for example, the Sports Award, the Bronze STEM Award, the Duke of Edinburgh's Silver Award or the BBC Young Reporters competition.

In our School Enterprise challenge, pupils gain hands-on experience of what it takes to succeed in business. From the Student Investor Challenge to our fun Dragons' Den competition, entrepreneurial skills are encouraged at every stage.

THE PLACE FOR SPORT

Our **Sport for All** programme is designed to support a healthy, balanced lifestyle, which offers activities to suit all, from novices to aspiring sportswomen.

St Mary's pupils now enjoy using our new state-of-the-art sporting facilities at our Long Road Sports Ground. Developed in partnership with Homerton College, part of the University of Cambridge, to deliver our ambitious vision for sporting education, Long Road includes: new AstroTurf pitches for hockey, rugby and football; new netball and tennis courts; athletics facilities comprising a grass running track and field events facilities; a new pavilion, including a kitchen and changing facilities; and floodlighting.

We also provide outstanding opportunities for students to compete competitively, with specialist sports coaches working alongside our sports teachers to support the students in hockey, netball, rowing, cricket, tennis and dance.

Our Boathouse on the River Cam, created in partnership with the City of Cambridge Rowing Club, opens up opportunities for all our girls to experience rowing on the Cam, from beginner to elite level.





Scan to
view



OUR LONG ROAD
SPORTS GROUND,
DEVELOPED IN
PARTNERSHIP WITH
HOMERTON COLLEGE,
UNIVERSITY OF
CAMBRIDGE, DELIVERS
OUR AMBITIOUS
VISION FOR SPORTING
EDUCATION.



MAKING A DIFFERENCE

We will encourage your child to reflect on their place in the world, enabling them to discover the power they have to make a difference in the world.

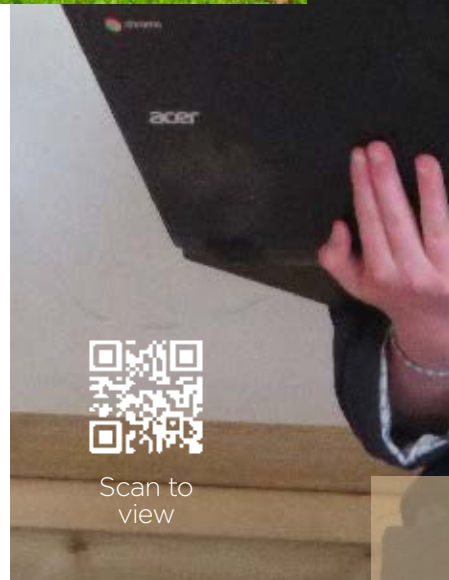
Our Christian ethos ensures that charitable giving and values such as justice, serving others and hard work are integral to school life.

Your child will have plenty of opportunities to champion causes that matter to them, by leading or participating in fundraising events and raising awareness.

Through our mentoring scheme, pupils in Year 10 and 11 mentor younger pupils, acting as role models and providing advice and support in regular meetings.

Making a difference takes courage

We take inspiration from our foundress, Mary Ward who faced adversity and failure with great courage. As your child finds their voice, they will build resilience – giving them the confidence and drive they need to effect change.





// PUPILS ARE MATURE,
REFLECTIVE, SELF-
CONFIDENT WITHOUT
BEING ARROGANT, AND
HIGHLY AWARE OF THE
NEEDS OF OTHERS

Parent //

Fundraising Fortnight

Each year we organise a fun fortnight of activities to raise funds for the Glanfield Children's Group which runs a holiday-pilgrimage to Lourdes in conjunction with the Catholic Association.

THE PLACE TO GROW AND BLOSSOM

Image by Laura C.



Your child will learn in a unique environment; the school is neighbour to the beautiful Botanic Garden, and is ten minutes from the station and Cambridge city centre, renowned both for its learning and its innovation.

Our facilities support a broad, engaging curriculum and include a vibrant Art Centre at No.47, an innovative Science Hub,

a gymnasium, outdoor gym, Drama Studios, Music Department and Learning Resource Centre.

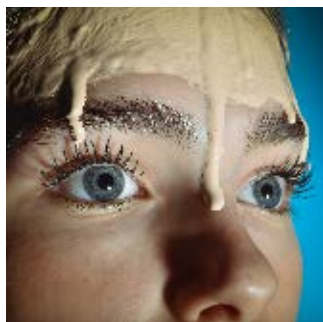


Image by Olivia B.

Inspiring Cambridge

Building on our Junior School curriculum, we extend our classroom across Cambridge, opening up and enriching our learning experience.

From exploring art in Kettle's Yard or the Fitzwilliam Museum, to connecting with the innovation of Silicon Fen and University expertise – our pupils benefit from all Cambridge has to offer including lectures, inspiring guest speakers and work experience opportunities.

stmaryscambridge.co.uk/inspiringcambridge



Beyond the classroom

Educational and cultural trips, including Rome, Germany and Iceland, broaden horizons. Challenges

closer to home are embraced through the Duke of Edinburgh's Award scheme and Exploration Society.

Our school day: stmaryscambridge.co.uk/seniorschoolday

School life: stmaryscambridge.co.uk/seniorschoollife

20%

of our school community
are boarders. Boarders
join us from **over 15**
different countries.

THE PLACE TO BELONG

Our day and boarding pupils form one big happy family across Junior School and Senior School, with boarders joining us from Year 5.

Mary Ward House provides a delightful and welcoming home-from-home, just a five minute walk from our schools, with stunning views across Cambridge University Botanic Garden.

Boarders from Year 5 to 13 live at Mary Ward House, just a 10-minute walk away and overlooking the University of Cambridge's Botanic Gardens. Our boarding community is led and supported by a team of dedicated, experienced and caring staff.

stmaryscambridge.co.uk/boarding





// AS A REGULAR
BOARDER, WE
FEEL SHE HAS
GOT THE BEST
OF BOTH WORLDS.
SHE HAS ENJOYED
COMPANIONSHIP
WITH OTHER
BOARDERS AND
A SENSE OF
COMMUNITY. AT
THE SAME TIME,
SHE HAS ACCESS
TO THE FAMILIARITY
AND COMFORT
OF HOME.

Parent



THE PLACE TO PREPARE

Our in-house careers service is second-to-none. Supported by bespoke careers advice and inspiration, our students confidently prepare for life beyond school.

Deciding which route to take post-GCSEs is a big decision. Working with you and your daughter, our Head of Careers, Senior Leadership Team,

Heads of Department, Heads of Year, tutors and external experts will help you to make informed decisions about the future.

stmaryscambridge.co.uk/careers

ST MARY'S SIXTH FORM

Students choose to join our Sixth Form because they will be expertly taught and tutored in small classes, whilst developing their independence as they prepare to fulfil their university or employment aspirations.

stmaryscambridge.co.uk/sixthform





BEYOND ST MARY'S

It is impossible to know what world your daughter will experience in the year 2030, 2040 and beyond.

What we provide is academic knowledge and practical skills, coupled with experiences and understanding, wisdom and values that will support her on life's journey and enable her to thrive in her chosen fields.

Perhaps she will trace the footsteps of recent alumnae to pursue

Physics at Oxford, Music at Cambridge, Biological Sciences at Durham, Chemical Engineering at Imperial, History at Leeds or Economics at LSE?

Maybe she will blaze her own trail. Whatever she chooses, we believe that inspired girls make great women.

stmaryscambridge.co.uk/destinations



JOINING OUR SENIOR SCHOOL

We welcome pupils with a broad range of academic abilities, who are enthusiastic and have a desire to engage in learning.

We accept applications to all Senior School years except Year 11, but typically girls join us:

- In Year 7 (age 11+) to build towards Key Stage 4
- In Year 9 (age 13+) to begin GCSE studies

Find out how to apply at:

stmaryscambridge.co.uk/joinus

+44 (0)1223 224 167

admissions@stmaryscambridge.co.uk

OPEN EVENT

Book an open event or arrange a personal visit today:

stmaryscambridge.co.uk/visit

or call **+44 (0)1223 224 167**





APPLYING TO ST MARY'S

1. Visit us

We warmly invite you to arrange a **personal visit** or to attend an **open event**, to understand more about life at St Mary's and to meet our leadership team, staff and students.

2. Apply for a place

To apply, simply download and complete an application form at **stmaryscambridge.co.uk/apply** and return it to our admissions team.

Contact us with any questions you may have on **+44 (0)1223 224 167** or at **admissions@stmaryscambridge.co.uk**

3. Assessment and interview

Our admissions process involves formal and informal assessments, including age-appropriate tests and an interview. We make this an enjoyable experience, so we can recognise your daughter's true potential.

Girls applying for **Year 3 to Year 9** are invited to a pre-assessment tea, to meet other prospective families, current pupils and teachers, and feel at ease.

Next steps

Arrange your personal visit or to attend an open event **stmaryscambridge.co.uk/visit** or call **+44 (0)1223 224 167**

Scholarships:

stmaryscambridge.co.uk/scholarships

Bursaries: **stmaryscambridge.co.uk/bursaries**

Admissions FAQs:

stmaryscambridge.co.uk/admissionsfaq

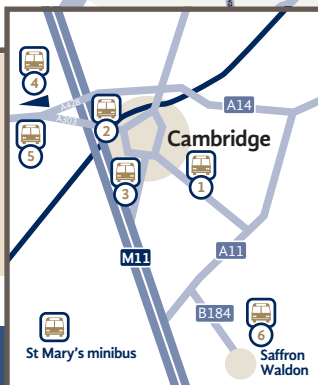
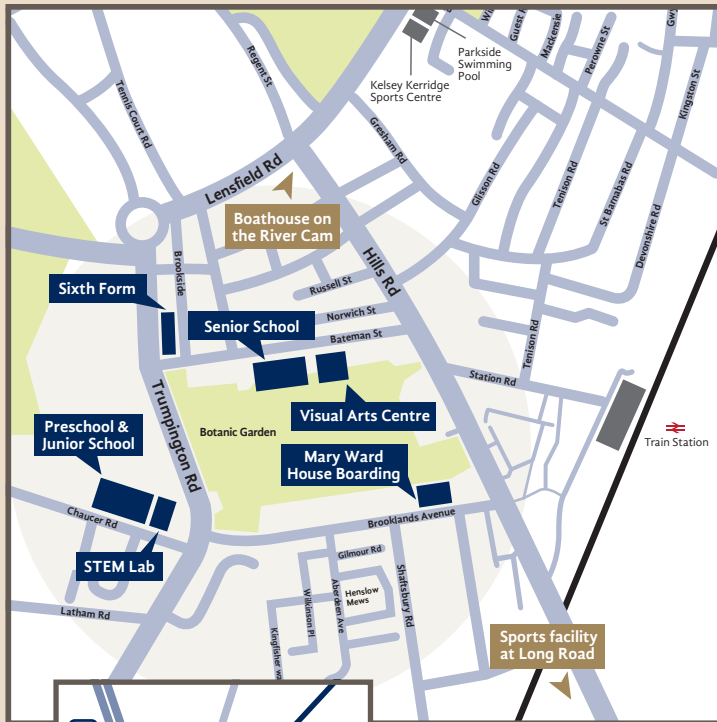
Assessment and sample papers:

stmaryscambridge.co.uk/assessment

Fees: **stmaryscambridge.co.uk/fees**

Application deadlines:

stmaryscambridge.co.uk/application






PARK AND RIDE

1. Babraham
2. Madingley
3. Trumpington
4. Cambourne
5. Hardwick
6. Saffron Waldon

ADMISSIONS

St Mary's School,
Bateman Street,
Cambridge CB2 1LY

+44 (0)1223 224 167
admissions@stmaryscambridge.co.uk

 stmaryscambridge
 @StMarysSch
 StMarysSchoolCambridge

stmaryscambridge.co.uk

gsa | Girls' Schools' Association

High Performance Learning
World Class School

CATHOLIC INDEPENDENT SCHOOLS' CONFERENCE

Excellence in Education
The Independent Association of Prep Schools

independent schools council

GIRLS' SCHOOLS' CONFERENCE