

# International Admissions Information

*September 2019 Entry*

---



St Mary's School  
CAMBRIDGE

# About St Mary's School, Cambridge

St Mary's School, Cambridge is a traditional day and boarding school for girls aged 4 to 18 in the heart of England. Situated in the centre of the vibrant city of Cambridge, we offer an academically rigorous education in a safe and secure learning environment. We are renowned for our academic excellence and superb pastoral care.

Our independence allows us to incorporate the best combination of traditional and modern teaching and learning approaches to achieve 'excellence in every possible area of provision', according to our latest Independent Schools Inspectorate (ISI) report. Our girls thrive in an extraordinary environment of self-development, new friendships, and discovery of passion.

Established on a founding vision which is over 400 years old, our educational provision continues to be tailored for girls. Ours is a Christian school of Catholic heritage in which girls of all faiths and secular backgrounds are warmly welcomed and where the precious uniqueness of each individual is valued.

The students profit from proximity to the prestigious University of Cambridge as well as other educational centres including Anglia Ruskin University. A range of highly prestigious organisations are also based in Cambridge with which our school has excellent connections for work experience and speaker opportunities including: Addenbrooke's, a world-class

teaching hospital; Microsoft; the Science Parks which form the core of the UK's 'Silicon Fen'; the Fitzwilliam Museum and other university museums.

The school is just a 10 minute walk from the train station from where it is only 45 minutes to the centre of London. It is within 70 miles of all the international London airports; Heathrow, Gatwick, Stansted and Luton are all within easy reach by coach and train.

There are 170 girls in the Junior School, 380 in the Senior School and 100 in the Sixth Form. Class sizes are small, around 20 children per class. Reflecting, valuing and celebrating the cosmopolitan community of Cambridge, nearly 20% of our students are from overseas, from around 30 countries worldwide. Boarding is offered for girls from Year 5 upwards, throughout the Senior School and Sixth Form. Students are invited to board on a weekly, flexible or a full-time basis in our newly-refurbished Mary Ward House in Brooklands Avenue: a beautiful new home next door to the Cambridge University Botanic Garden.

## Our governors

Our Governing Body comprises representatives with backgrounds in education and faith organisations, business and industry:

Mr S Westley (Chair of Governors)  
Mr R Burch  
Ms J Clements OBE  
Prof J Driscoll  
Mrs V Espley  
Ms R Gleeson

Mr A Grant  
Mr R Haynes  
Mr C Jones  
Mr M Ledzion  
Mr A Milne  
Sister F Orchard

Mrs M Pattinson  
Mr J Pyne  
Mrs S Squire  
Dr N Ward

The Chair of Governors can be contacted via Mrs Katy Dix, Executive Officer. Please write to St Mary's School, Cambridge, Bateman Street, Cambridge, CB2 1LY or telephone +44 (0)1223 353253.

# Why board at St Mary's School, Cambridge?

- Fantastic Cambridge location
- Superb new boarding house
- Boarders of all ages live together
- 'Big Sister' atmosphere
- No exeat weekends
- Exciting weekend trips and activities programme\*
- Outstanding EAL provision\*
- Very close to Cambridge train station
- Easily accessible by all London airports

\* included in the fees



## How can we visit the school?

We delight in welcoming visitors and showing them around our school.



### Junior School

- **Saturday 22 September 2018**  
Open Morning (9.30am - 12.30pm)
- **Saturday 17 November 2018**  
Taster Workshop (all ages) (10.00am - 12 noon)
- **Saturday 8 June 2019**  
Taster Workshop (all ages) (10.00am - 12 noon)

### Senior School

- **Saturday 6 October 2018**  
Open Morning (9.30am - 12.30pm)
- **Saturday 17 November 2018**  
Taster Workshop (9.00am - 12 noon)
- **Saturday 8 June 2019**  
Taster Workshop (9.00am - 12 noon)

### Sixth Form

- **Thursday 18 October 2018**  
Open Evening (6.00pm - 9.00pm)

### Whole School

- **Friday 15 February 2019**  
Open Morning  
(Junior School: 10.00am -12 noon)  
(Senior School: 11.00am -12.30pm)

We hold Open Days throughout the school year, but prospective students and their families are always welcome to make an individual appointment to tour the school and to meet with the Headmistress or Head of Juniors and relevant members of staff in term time.

Our Open Days allow prospective students and their families to discover our school by seeing our facilities, meeting staff and current students, and asking questions. Our Taster Workshops will give your daughter the opportunity to sample life at St Mary's School, Cambridge.

Please contact our admissions team on **+44 (0)1223 224157** who will be happy to arrange an appointment or book you in to attend an upcoming event.

To reserve a place on one of the above events, please contact the admissions team on **+44 (0)1223 224157** or email [admissions@stmaryscambridge.co.uk](mailto:admissions@stmaryscambridge.co.uk)

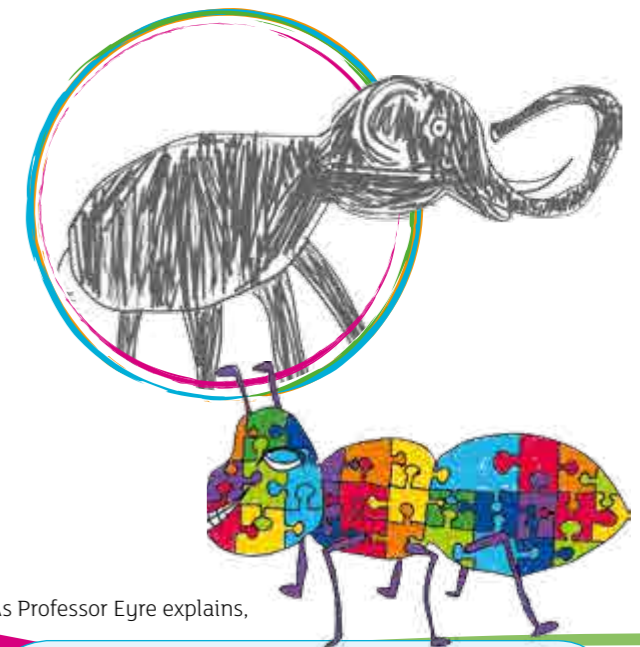
## High Performance Learning



One of the most exciting innovations for the school this year has been to focus resources on best practice in Teaching and Learning, by teaming up with Professor Deborah Eyre and adopting High Performance Learning (HPL) across the school.

We have willingly embraced this educational philosophy since it fits integrally with our school ethos and our Mary Ward charism in terms of promoting the view that there is 'room at the top' for many more students than traditional approaches to Teaching & Learning might suggest.

The HPL approach is based on research in neuro-science psychology which suggests that the brain is more plastic and malleable than previously thought. So instead of seeing inherited intelligence and talent as fixed traits, we should all be seeing them as a starting point which can be developed through practice and training. It takes good schooling; good parenting; and dedication and hard work from students.



As Professor Eyre explains,

*"For parents HPL offers a more optimistic outlook. Instead of being in a position of powerlessly seeing your child's intelligence, or lack of it, unfold, it is possible from the earliest days to nurture and encourage it. So, whilst it is rewarding if your young child shows an instant aptitude for numbers it is also the case that if they don't, then a 'slow start' is likely to be just that, a slow start, not an indication that your child has no mathematical ability. You can help your child develop an interest in numbers and with that comes increasing fluency."*

Staff and students have embarked on this exciting journey to become a HPL World Class School within two years and we are proud that we have already been selected as an HPL Ambassador School. We look forward to achieving the HPL Award during the next academic year.

You can read more about HPL and how we have begun to embed its principles in our most recent edition of *Accolade*. Please request a copy from our Admissions Team or download it from our website.



## Digital developments

*We have witnessed in the 21st century a digital revolution which has redefined many aspects of our students' lives. Over the years, we have invested in our digital offering from hardware to coding programmes, and from September 2018, each student and staff member will be provided with a personal device (iPad or Chromebook).*

Technology has changed the way in which students learn, gather information, think and interact, and for this reason we have transformed our digital infrastructure to ensure that we are effectively preparing our students for life beyond school.

In September 2017, we introduced a new Microsoft365 platform to enhance teaching and learning throughout the School:

- communication
- collaboration
- content
- creativity
- empowerment
- organisation
- information
- anytime, anyplace, anywhere

We are also fully committed to working closely with parents, through newsletter updates and information evenings, to help their children navigate the opportunities and challenges that our new digital world presents.



## Sport



- 50 students training with our flourishing new Junior Rowing Programme
- Ambitious rowing development programme, taking students from 'Learn to Row' squad to 'GB trials' squad
- Work begins in Summer 2018 on refurbishing our new boathouse in partnership with Cambridge City Rowing Club
- The U16 netball team won both the Independent Schools Tournament and the County Schools Tournament making them Cambridgeshire County Champions.
- The U14 netball team finished 3rd in the Independent Schools Tournament and reached the semi-finals of the County Schools Tournament.
- The U16 and U18 hockey teams qualified for the Cambridgeshire County Hockey Tournaments.
- Five girls selected to run for Cambridgeshire Schools at the Anglian Schools Cross Country Competition
- Three girls qualified to represent the East of England for the National English Schools Cross Country Competition

- Our soon to be upgraded Long Road Sports Ground, in partnership with Homerton College, Cambridge, will feature two new AstroTurf pitches for hockey, rugby and football; new netball and tennis courts; athletics facilities comprising a grass running track and field events facilities; practice nets for all ball sports; a new pavilion, including physio room, kitchen, and changing facilities; and floodlighting.

- We have a growing number of students who take part in Eton Fives in the heart of Cambridge too!



# Admissions assessment and interview process



## How do you assess students for entry to St Mary's School, Cambridge?

Education at St Mary's School, Cambridge embraces the academic and spiritual, creative and sporting, personal and social development of the individual and this is reflected in our entrance procedure. Entrance to St Mary's School, Cambridge is through a combination of methods: an online assessment, or written assessments, and an interview (which can be conducted in person at the school or via Skype).

## How good does my daughter's level of English need to be?

Students need to have strong speaking and written, reading and listening skills to be clear, fluent and confident communicators in English in order to access the curriculum, engage in dialogue in class with their teachers, work collaboratively in groups with their peers and ensure success in public examinations. Although we do not ask that students have a formal qualification before starting with us, those joining in Year 7 and Year 8 should be about an IELTS level 4.0, in Year 9 and Year 10 should be about an IELTS level 5.0 and in the Sixth Form students need to be about an IELTS level 6.0 standard.

## The education system in my home country does not match the UK system. Can my daughter join a different year group?

We sometimes place students in a year below their peers, to more appropriately reflect their ability in, and comprehension of, the English language. If your daughter requires a visa then she must be under 18 on the first day of the year in which she begins her study with us.

## What is the assessment process?

### Junior School

#### Reception, Year 1 and Year 2 entry:

Assessments for all prospective children wishing to join Reception, Year 1 or Year 2 will take place during a short visit to the Pre-prep. It will include age appropriate activities, such

as puzzles, letters, numbers and some creative tasks and will be carried out by the Pre-prep co-ordinator. If you and your daughter are unable to attend this in person, we can conduct an alternative assessment via Skype.

#### Year 3 to Year 5 entry:

Pupils are assessed via written assessments in Mathematics, Verbal Reasoning, Non-Verbal Reasoning and Creative Writing. These can be taken during a visit to St Mary's Junior School, Cambridge, or if you are unable to visit in person, our International Admissions Officer can help you find a local test centre in your home country. In most cases, applicants in this situation sit these assessments at their current school.

#### Year 6 entry:

##### English as a first language:

Pupils are assessed via written assessments in Mathematics, Verbal Reasoning, Non-Verbal Reasoning and Creative Writing. These can be taken during a visit to St Mary's Junior School, Cambridge, or if you are unable to visit in person, our International Admissions Officer can help you find a local test centre in your home country. In most cases, applicants in this situation sit these assessments at their current school.

##### English as an additional language:

Applicants whose first language is not English will take the online UKiset test\*; an assessment specifically designed for international applicants to British independent schools.

Subject to performance in the UKiset test, applicants will be interviewed either in person or via Skype.

\*Applicants must be no younger than 9 and half years old to take the UKiset test.



## Senior School & Sixth Form

### English as a first language:

Applicants whose first language is English will take the following written assessments depending on the year they wish to join:

- Year 7 to Year 9: students are assessed in English and Mathematics
- Year 10: students are assessed in English, Mathematics and Science
- Lower Sixth: students are assessed by examination in each of their proposed A Level subject options

Subject to performance in the assessments, students will be invited to interview (usually via Skype).

### English as an additional language:

Applicants whose first language is not English will take the online UKiset test; an assessment specifically designed for international applicants to British independent schools.

Subject to performance in the UKiset test, students will be invited to interview (usually via Skype).

There will be additional assessments for applicants to the Sixth Form who wish to study certain subjects:

- *Modern Languages* – applicants will be required to participate in an oral conversation in the chosen language(s), either in person or via Skype
- *Art and Textiles* – applicants will be required to submit a portfolio
- *Drama and Music* – applicants will be required to take a written assessment and participate in a practical assessment, either in person or via Skype

### UKiset test

Applicants whose first language is not English will take the online UKiset test; an assessment specifically designed for international applicants to British independent schools.

You can visit the website ([www.ukiset.com](http://www.ukiset.com)) for further information or to register to take the test. This test can be taken at approved test centres around the world, or in person at St Mary's School, Cambridge. Once the test has been taken, UKiset will send us a full report of the test results electronically.

### What will the interview be like?

Interviews for entry can be conducted by Skype for students who reside outside of the UK, although students are always welcome to visit the school and have their interview in person. Your daughter will be interviewed by a member of the Senior Leadership Team. This is an opportunity for us to get to know your daughter better as an individual as well as a chance for your daughter to get to know us too and ask any questions she may have. It will hopefully seem more like a chat than an interview! We are interested to learn more about her academic interests or achievements. We would also like to learn more about her extra-curricular pursuits, such as sport, music, community service etc. and any aspirations for the future including university and degree course aspirations, particularly if your daughter is applying for A Levels through our Sixth Form.

### When will my daughter find out if she has been offered a place?

We try very hard to ensure that we make our decisions as soon as possible, and we aim to inform you of the outcome within one week after the final stage of assessment.

### When is the deadline for accepting my daughter's place?

The deadline for accepting your daughter's place will be clearly stated on her offer letter, and is usually two weeks following the date of the offer letter.

Further information on our assessment process is available from our admissions team by email at [admissions@stmaryscambridge.co.uk](mailto:admissions@stmaryscambridge.co.uk) or telephone on **+44 (0)1223 224157**.

# Frequently Asked Questions

*This section answers some of the more common questions asked by parents and prospective students. Our admissions team (+44 (0)1223 224157) is always happy to answer any specific queries.*

## Do students at St Mary's School, Cambridge wear a school uniform?

Yes, students in the Junior School and in Year 7 to Year 11 wear school uniform. Students in Lower Sixth and Upper Sixth do not wear a uniform but, instead, wear smart-casual clothes.

## Do you have to be a practising Catholic to attend St Mary's School, Cambridge?

While the school is a Catholic, Christian community, we welcome students of all faiths and those from secular backgrounds.

## How Catholic is the school?

In normal school routine, the emphasis is not so much on Catholic belief and teaching but rather on the Christian values which underpin them, and in particular on the 12 Characteristics of a Mary Ward School, which are accessible to people of all denominations, all faiths and none. Students explore these values through daily assemblies or form prayers, termly religious services and annual Days of Reflection. A very lively Chaplaincy team along with the school's charities committee enable girls to live out these ideals and put them into practice in their day-to-day lives.

## How big is the typical class size?

Junior School classes are usually up to 21 girls. In Year 7 to Year 9, classes are usually up to 24 girls, although they are often smaller particularly in practical subjects. GCSE classes have typically 10-20 students and Sixth Form classes do not usually exceed 14 students.

## How long is the school day?

Our Junior School is open from 8.00am, from which time pupils are supervised in their classrooms at no additional cost to parents until 8.30am. From 8.30am pupils may go to their form rooms where they are greeted by their teacher. Registration is at 8.45am by which time all pupils must be in school. Lessons end at 3.20pm for Reception, Year 1 and Year 2; 3.30pm for Year 3 and Year 4; and 3.40pm for Year 5 and Year 6. After-school care is provided every day until 6.00pm at an additional cost and includes a snack. During this time a variety of extra-curricular clubs and activities take place, most of which finish at 5.00pm.

The Senior School is open from 7.30am to 6.00pm. Registration is at 8.30am. Lessons end daily at 4.00pm; however, there

is a varied programme of after-school clubs and activities (including homework club), until 6.00pm.

Sixth Form students do not have formal lessons for the entire school day as younger girls do. A typical Sixth Form timetable will consist of:

- Lessons in chosen academic subjects
- A range of enrichment lessons including sport
- A number of unsupervised study periods

## What sort of trips and visits are on offer?

A great number of visits take place annually. Some are attached to academic study, such as the Geography field trips, others are of a social nature, such as the Year 7 and Year 9 activity trips. Some of these are residential, often taking place in the school holidays, and many are overseas, but there are also many local trips including short walking visits to Cambridge museums and local theatres. Some of the trips are open to girls from more than one year group, which gives a good opportunity to extend social links. With the exception of some field trips, these visits are optional but are strongly recommended as an opportunity for enrichment.

The boarding staff arrange trips to make use of local amenities in the city, including to The Fitzwilliam Museum, cinema and theatre trips, punting, ice-skating and bowling. There are also trips to Brighton, The Festival of Ideas, the firework display at Midsummer Common and the German market in Birmingham.

## Does St Mary's School, Cambridge operate its own school transport?

Cambridge is well served by public transport and the school is just a 10 minute walk from the railway station. The school operates a free minibus service from the Trumpington Park and Ride car park every morning and evening for Junior School pupils. We also run a free minibus service between the Junior and Senior Schools to assist families with students at each site. We keep our minibus service under review in response to parental demand, so please check with the Admissions team for any updates.



## Is there an additional cost for school meals and are they compulsory?

School lunches are provided to day students in the Junior and Senior School and Sixth Form at an additional cost. A varied menu is offered daily, including fresh fruits and salad, and food is prepared on the premises to a high standard. For Junior School pupils these lunches are compulsory but in the Senior School and Sixth Form students can choose whether or not to have school lunches. Meals for boarders are included in the termly boarding fee.

## Are instrumental music and drama lessons available and is there an additional charge for these?

Students throughout the Junior and Senior Schools are encouraged to take advantage of the provision of tuition in a wide range of orchestral and other instruments by peripatetic music staff and to benefit from our specialist London Association of Music and Drama (LAMDA) teaching. There is an additional charge for these sessions.

## What is the induction process for new students?

Once your daughter has accepted her place for the Junior School, Year 7 or Year 9, she will be invited to our Induction Day in June. On this day your daughter will meet her peers and experience a typical day in school. For new students in other year groups (Year 8, Year 10 or Lower Sixth), induction takes place at the beginning of the Autumn Term. All new students are also paired up with a buddy who will help them to settle into their new school routine and there are welcome events and information evenings for parents.

A full induction programme is undertaken by all new students when they arrive in the Autumn Term. This starts with a dedicated induction weekend for boarders, which involves a tour of the school site, a tour of Cambridge, help making appointments for uniform fitting, help with opening bank accounts and any actions needed to fulfil the terms of their visas, such as police registration.

## Do you offer visa sponsorship?

St Mary's School, Cambridge is licensed as a Tier 4 Sponsor by UK Visas and Immigration (UKVI) and offers child student visa sponsorship for full boarders. International students from outside the European Union must apply for permission to come to study in the UK. For students who require a visa, we have appointed the services of The Taylor Partnership Ltd who are responsible for issuing the CAS (Confirmation of Acceptance for Studies) which is needed to get a visa. Immigration regulations mean that you cannot apply for a visa more than three months in advance of the start of the course (i.e. you cannot apply before June for a course that starts in September). Three months before the start of your daughter's course, we will pass your details directly to The Taylor Partnership Ltd who will contact you on the school's behalf to begin the visa application process for your daughter.

## Do I need to pay a deposit?

Yes, the deposit for a day place is £500, deposits for a weekly or full boarding place for European Union students (if applicants' parents are resident citizens of the EU) is £1,000 and deposits for a weekly or full boarding place for non-European Union students (if applicants' parents are not citizens or residents of the EU) is £5,000. The deposit is to be paid on acceptance and is refundable once a student leaves the school. Please note that the deposit is non-refundable in the case of non-attendance at St Mary's School, Cambridge.

## Do students need a guardian?

Students who do not have a family member in the country are legally required to have a guardian in the UK and we will not accept a student to the school unless they have one. Often educational agents include the arrangement of guardians in their service to families; alternatively families can apply direct to AEGIS. It is the responsibility of each family, not the school, to ensure that the guardian is in place.

Guardians must:

- Live within 75 miles of the school.
- Be available to host the student during the school holidays, as well as in exceptional circumstances, such as owing to illness or disciplinary issues and must be fully responsible for making travel and accommodation arrangements for the student during these times.
- Be able to communicate effectively with parents, the school and the student.
- Be able to come to the school at short notice, if necessary.
- Represent parents at parents' evenings and other school activities, which might normally be attended by parents.
- A list of guardian agencies used by current students is available from the admissions team on request.

## Do you have Exeat weekends?

Due to Exeats declining in popularity they have been gradually decreased over the last five years and there are now no Exeat weekends at St Mary's School, Cambridge. Boarders may however visit their guardians or go home at the weekend providing written permission is given to the Housemistress at least 48 hours in advance.

## Do students have their own rooms?

Year 5 to Year 9 boarders share a room with four or five other girls, girls in Year 10 to Lower Sixth will usually share a room with one other student, with Upper Sixth students having single study bedrooms.

## Does the school have a governing body and how can they be contacted?

Our governing body comprises representatives from education, industry and faith organisations. The Chair of Governors, Mr S Westley, can be contacted via Mrs Katy Dix Executive Officer. Please write to St Mary's School, Cambridge, Bateman Street, Cambridge, CB2 1LY or telephone **+44 (0) 1223 353253**.

# Do you offer scholarships and bursaries?

## Scholarships

*Our scholarship provision aims to celebrate excellence and outstanding achievements in academic, creative and sporting domains, as well as recognising commitment and service to the wider community.*

In awarding scholarships, we aim to provide an opportunity for scholars to develop their talents and a sense of their own worth. In return, scholars are expected to act as role models to their peers and contribute to the wider life of the school, thus fostering a love of learning and commitment to service. All scholarship assessments take place in the year prior to entry, with the exception of the Year 7 academic scholarship assessment, which will take place once the girls have joined the school during the Autumn Term 2019.

The length of the scholarship award varies in each category. For Year 7 scholarships, the award lasts while the student is in Year 7 and Year 8; Year 9 scholarships last while the student is in Year 9 to Upper Sixth; and for Lower Sixth scholarships, the award is for the duration of the Sixth Form.

Students may apply for any number of scholarships, but successful applicants may only hold a maximum of two awards up to the value of 20% of the day school fees in total.

Scholarships are usually awarded at 5%, but may be higher in exceptional circumstances. The overall number of awards made each year and in each category is dependent on the standard of the applicants, is at the discretion of the Headmistress and is not disclosed.

**For detailed information about our scholarship programme and the assessment process, please visit the school website:**

[www.stmaryscambridge.co.uk](http://www.stmaryscambridge.co.uk)



## Bursaries

*A bursary is means-tested financial support towards the payment of school fees, awarded on a sliding scale based on need.*

Awards may be made up to 50% of the day school fees, but may be higher in exceptional circumstances. St Mary's School, Cambridge considers bursary applications from current parents, so that assistance can be given to help reduce school fees should their financial position change adversely, making the continuing attendance of their daughter at St Mary's School, Cambridge difficult. It is our tendency to support those who have committed to the school and paid fees for a number of years and who, unfortunately, fall upon unexpected hard times. Our first call on resources will be to support students at mid points in their studies i.e. from Year 10 into Year 11 or Lower Sixth into Upper Sixth in order that public examination courses may be completed without disruption.

We may also consider bursary applications from prospective parents who would otherwise not be able to pursue an application for their daughter to the school, when resources allow.

All bursaries are annually reviewed and it is our expectation and hope that families become less dependent on school funds in order that we can continue to spread the monies available around as many worthy candidates as possible i.e. we might anticipate that a bursary offered at 25% in Year 7, would be reduced to 15% in Year 8, 5% in Year 9 and no longer awarded in Year 10 so that a different child becomes the recipient of that funding. The provision of all bursary funding is at the discretion of the school and is subject to the means-testing rigour expected of schools with charitable status.

For further information about our bursaries, please contact the Bursar, Mr Mark Johnstone via email at [bursar@stmaryscambridge.co.uk](mailto:bursar@stmaryscambridge.co.uk).

There is no formal deadline for international bursary applications – these will be considered by the Headmistress on the point of application.

### Application deadlines

There is no formal deadline for international scholarship applications – these will be considered by the Headmistress on the point of application. All scholarships are awarded at the Headmistress' discretion.

### Assessment dates

\*Assessments can be taken after the admissions team has received a completed application form.

### Summary of scholarship provision:

Scholarship	Year 7	Year 9	Lower Sixth
Academic (All Round)	✓	✓	✓
Academic (STEM)		✓	✓
Art	✓	✓	✓
Creative Writing	✓	✓	✓
Dance	✓	✓	✓
Design and Enterprise	✓	✓	✓
Drama	✓	✓	✓
Mary Ward	✓	✓	✓
Music	✓	✓	✓
Sport	✓	✓	✓
Textiles	✓	✓	✓

## What are the fees?

The fees below are for the 2018/2019 school year and are indicative of fees at the school; however, the fees are subject to annual review. The governors reserve the right to increase fees if circumstances make this necessary but every effort is made to provide a first-class independent education at the minimum expense.

### Junior School

Items marked \* are optional

#### Admissions costs

- Application fee (non-refundable) **£75**
- Deposit for day place **£500**
- Deposits for a weekly or full boarding place for European Union students (if applicants' parents are resident citizens of the EU) **£1,000**
- Deposits for a weekly or full boarding place for non-European Union students (if applicants' parents are not citizens or residents of the EU) **£5,000**

#### School fees

- Reception, Year 1 and Year 2 **£3,303 per term**
- Year 3 and Year 4 **£4,325 per term**
- Year 5 and Year 6 **£4,559 per term**
- **Year 5 and Year 6**
- Flexi-boarding **£75 for one or two nights; £70 per night if it is for three nights in any one week.**

### Senior School and Sixth Form

Items marked \* are optional

#### Admissions costs

- Application fee (non-refundable) **£75**
- Deposit for day place **£500**
- Deposits for a weekly or full boarding place for European Union students (if applicants' parents are resident citizens of the EU) **£1,000**
- Deposits for a weekly or full boarding place for non-European Union students (if applicants' parents are not citizens or residents of the EU) **£5,000**

#### School fees

(including books, stationery and examination fees)

- Day **£5,287 per term**
- Flexi-boarding **£75 for one or two nights; £70 per night if it is for three nights in any one week**
- Weekly boarding (including all school meals) **£9,344 per term**
- Full boarding (including all school meals) **£10,854 per term**  
*There are three terms per year*

- Weekly boarding (including all school meals) **£8,762 per term**
- Full boarding (including all school meals) **£10,273 per term**  
*There are three terms per year*

#### School meals

- School lunch **£190 per term**

#### School uniform

- Junior School pupil **approx. £400**

#### School clubs\*

- After-school care, including school clubs, until 5.00pm **£6.50 per session**
- After-school care, including school clubs, until 6.00pm **£13 per session**

#### School uniform

- Senior School student **approx. £400**
- Sixth Form student\* – No uniform required but students may like to purchase the optional school sports kit or other items **approx. £50**

#### School meals for day students\*

- School lunch **£4.10 per day**

#### Insurance\*

- Fees Refund Scheme Insurance (day students) **0.65% of termly fees**
- Fees Refund Scheme Insurance (boarding students) **0.55% of termly fees**

#### Individual instrument tuition\*

**£205 for 10 lessons per term**

#### LAMDA drama\*

Group lesson (two students) **£190 for 10 lessons per term**

#### Exploration Society

(open to Year 4 to Upper Sixth)\*

For further information visit [www.explorationsociety.co.uk](http://www.explorationsociety.co.uk)

## How do I apply for a place?

We welcome applications to all year groups (except Year 11 and Upper Sixth), subject to space. We accept direct applications or applications via an educational agent.

We would be delighted to hear from you if you think your daughter would benefit from the ambitious education and excellent examination results achieved at St Mary's School, Cambridge. Demand for our boarding places is very high with a great deal of oversubscription in every year group and so we recommend that you apply as early as possible. There is no formal deadline for international applicants but it is best to apply at least 12 months before the desired point of entry, since our boarding places are frequently all allocated by March of the year when students join in the following September.

To make an application you will need to complete an application form and pay an application fee of £75. Please visit our school website to complete the application form, alternatively please contact the admissions team on **+44 (0)1223 224157** or email [admissions@stmaryscambridge.co.uk](mailto:admissions@stmaryscambridge.co.uk).

On receipt of your application form, the admissions team will contact you with more information about the next steps in the application process. Under certain circumstances and at the Headmistress' discretion, late applications may be considered.





Junior School: 6 Chaucer Road, Cambridge CB2 7EB  
Senior School: Bateman Street, Cambridge CB2 1LY

[admissions@stmaryscambridge.co.uk](mailto:admissions@stmaryscambridge.co.uk)  
+44 (0)1223 224167 or +44 (0)1223 224157

[stmaryscambridge.co.uk](http://stmaryscambridge.co.uk)



St Mary's School  
CAMBRIDGE